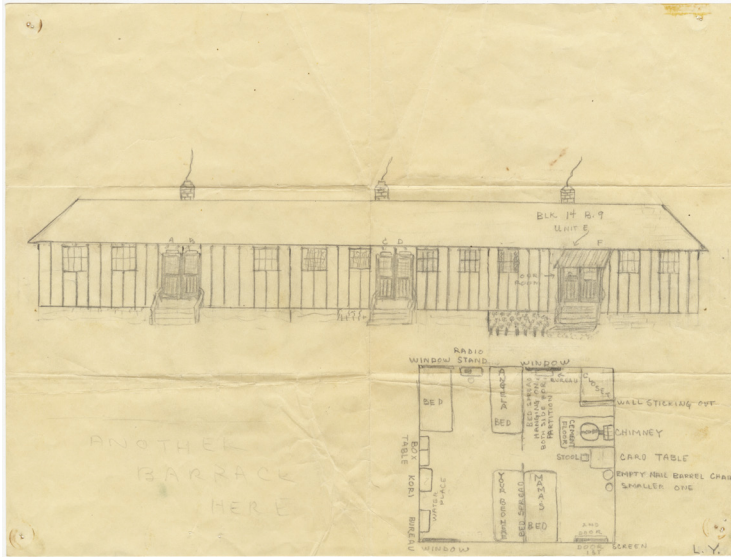


# Mapping Your Home

*Take inspiration from JANM’s collection to document the space you live in.*



Japanese American National Museum (Gift of the Gihachi and Tsugio Yamashita Family, 94.166.24)

She drew the exterior as well as a floorplan of the interior. At the time, Gihachi was living in Camp Livingston, LA. He displayed the drawing in the mess hall so others could see what a barrack and room looked like.

## Collection Connection

This drawing comes from JANM’s Yamashita family collection. During World War II, Gihachi Yamashita was separated from the rest of his family and imprisoned in various detention centers. His wife, Tsugio and daughters, Lillian, and Angela were sent to a temporary detention center in Santa Anita, CA before being sent to a concentration camp in Rohwer, AK.

Lillian was around 14 years old when she sent her father this detailed drawing of the family’s barracks in Rohwer. She

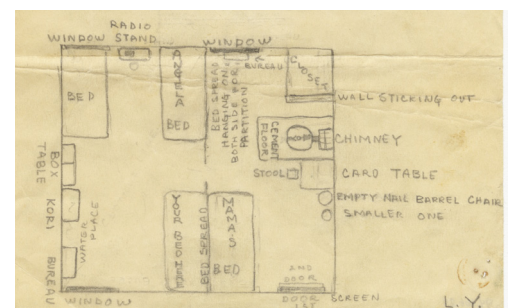
## Now it’s your turn!

Take inspiration from Lillian’s map and draw your home. Imagine you wanted to show someone who has never visited you before what your home looks like. Materials you’ll need are paper and something to draw with.

Draw what your home looks like from the outside and then draw the floorplan of the inside. If you don’t feel like drawing your whole home, pick your favorite room to draw.

- What shapes make up your home?
- What shapes are each of the rooms?
- Where are the main pieces of furniture?
- What other details are important to include?

**Share your creations** with us on social media using the hashtag **#JANMinspired**



(detail)